

# Nästa talare

---

**Elias Uhlin**

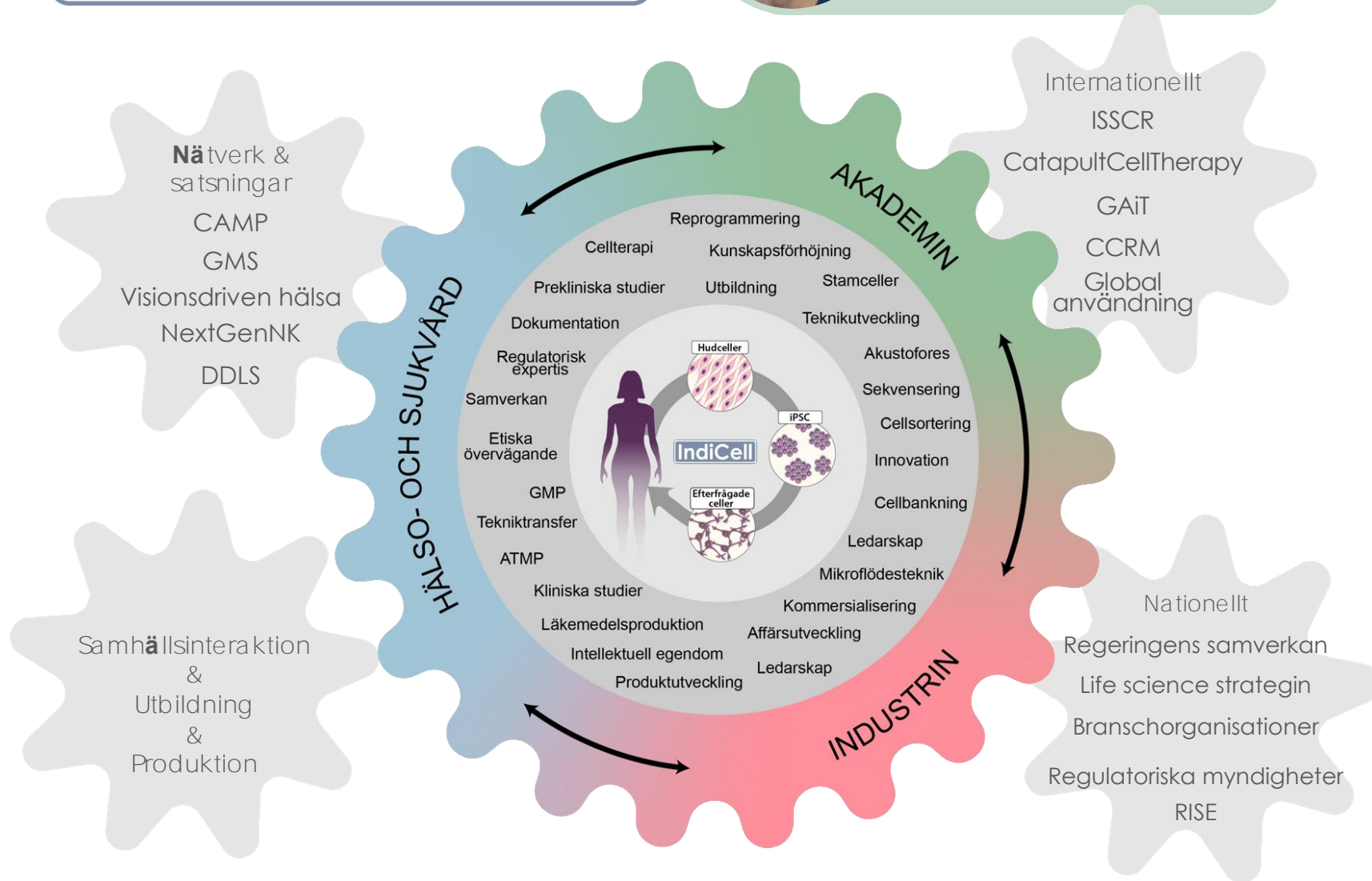
Projektledare, Lunds Universitet

**Indicell innovationsmiljö for ATMP tillverkning  
samt behovet av infrastruktursatsningar**

# IndiCell



**Anna Falk**  
Koordinator Indicell  
Professor, LU



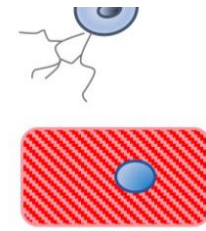
**LUND**  
UNIVERSITY



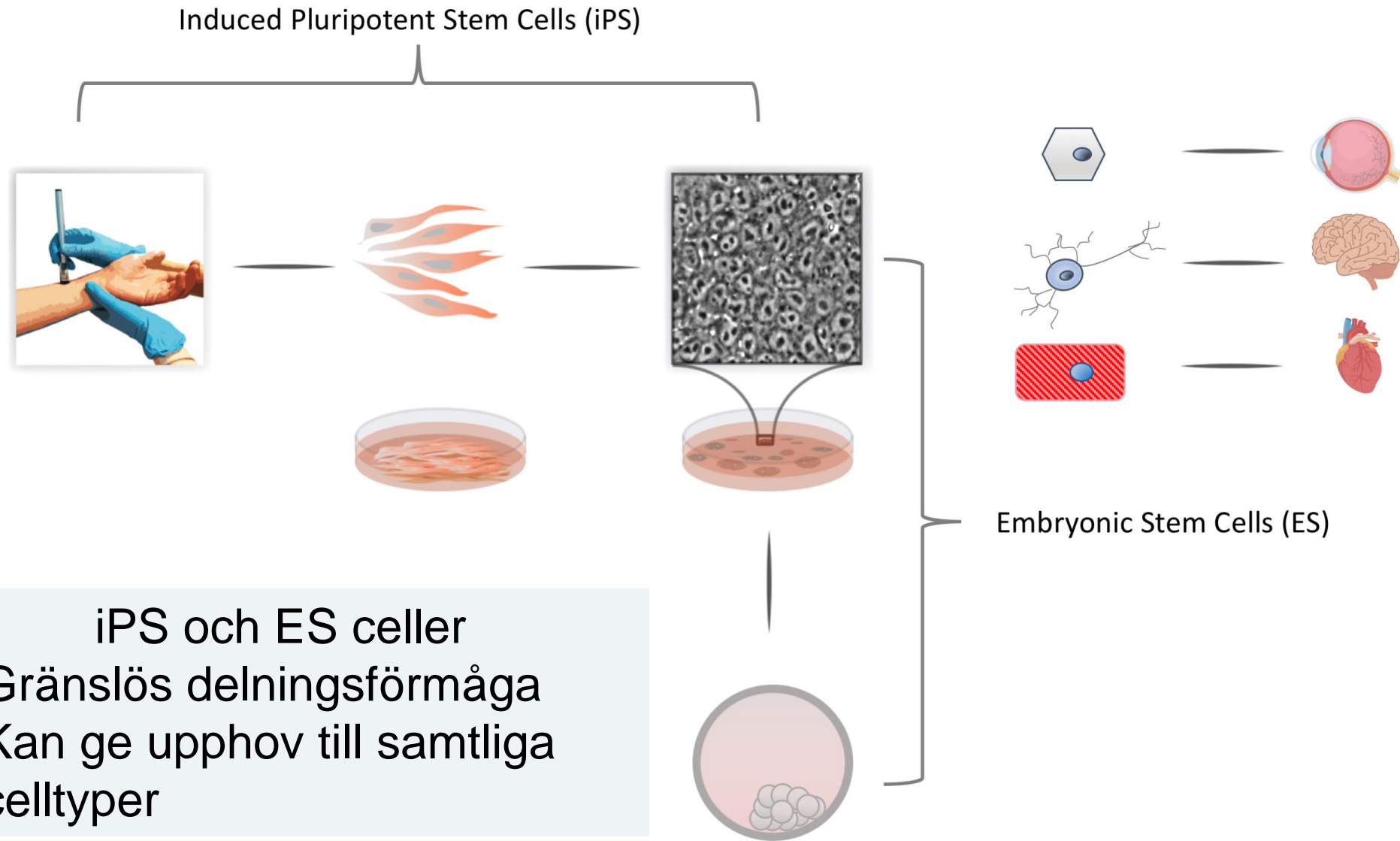
Första kliniska  
prövningen,  
användning av  
fostervävnad i Lund



Post  
mortem  
analys av  
24 år  
gammalt  
transplantat  
Li et al



# Pluripotenta Stamceller



## iPS och ES celler

- Gränslös delningsförmåga
- Kan ge upphov till samtliga celltyper

# Pluripotenta Stamceller har en potential att revolutionera vårt sätt att behandla sjukdomar och skador

Ersätta skadade eller döda celler

Diabetes Typ I

Parkinsons sjukdom

Stroke

Makuladegeneration

Hjärtsvikt

Ryggmärgsskada

Behandling

CART

NK-celler

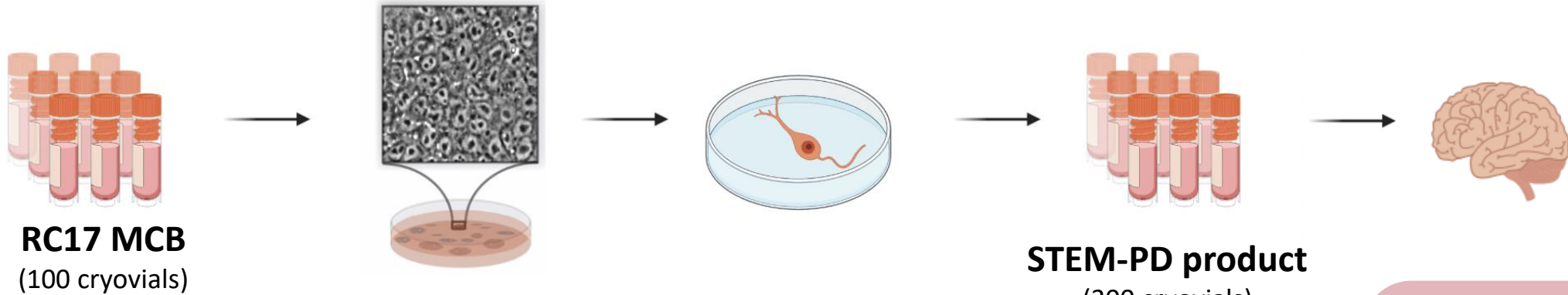
GvHD



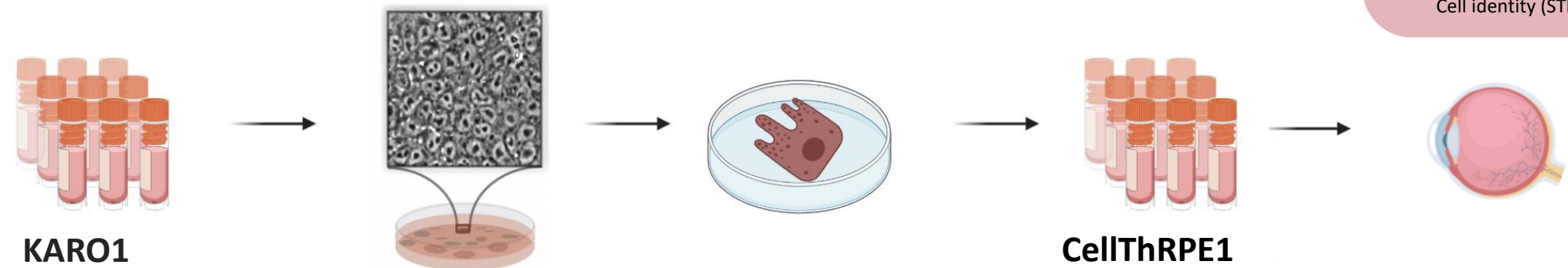
# PSC derived ATMPer



**Malin Parmar**  
Professor, LU



**Fredrik Lanner**  
PI, KI

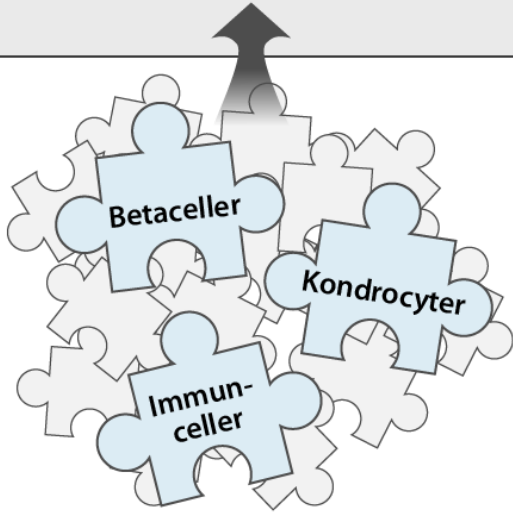
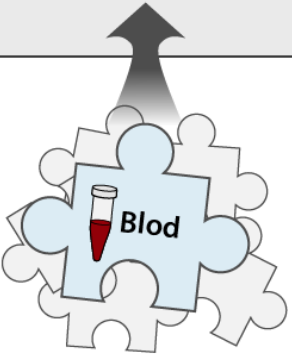
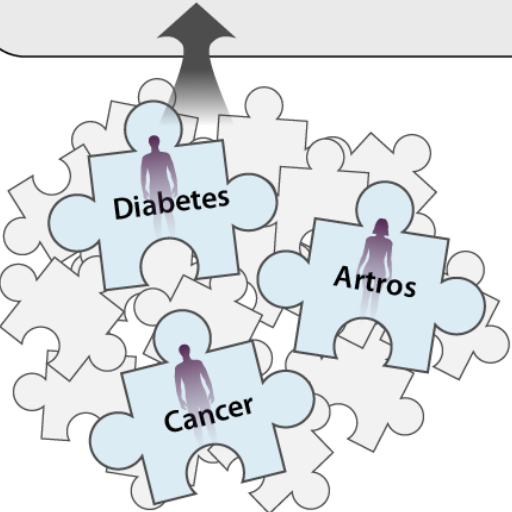
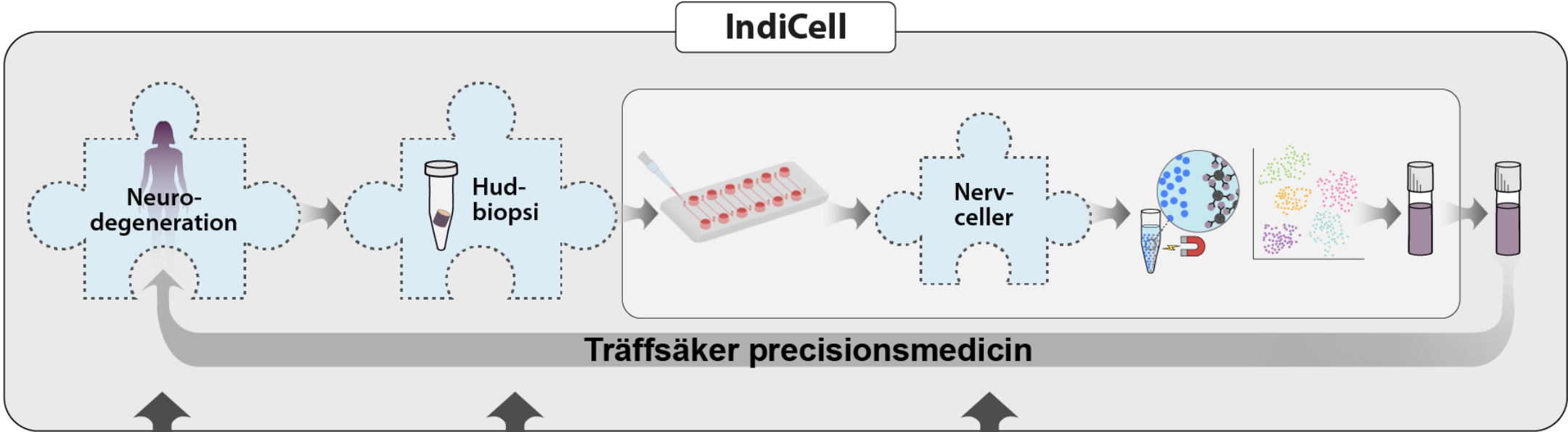


**Safety**  
**Efficacy**  
**QC testing:**  
Target purity  
Impurities  
Sterility  
Endotoxins  
Mycoplasma  
Adventitious agents  
Cell identity (STR)



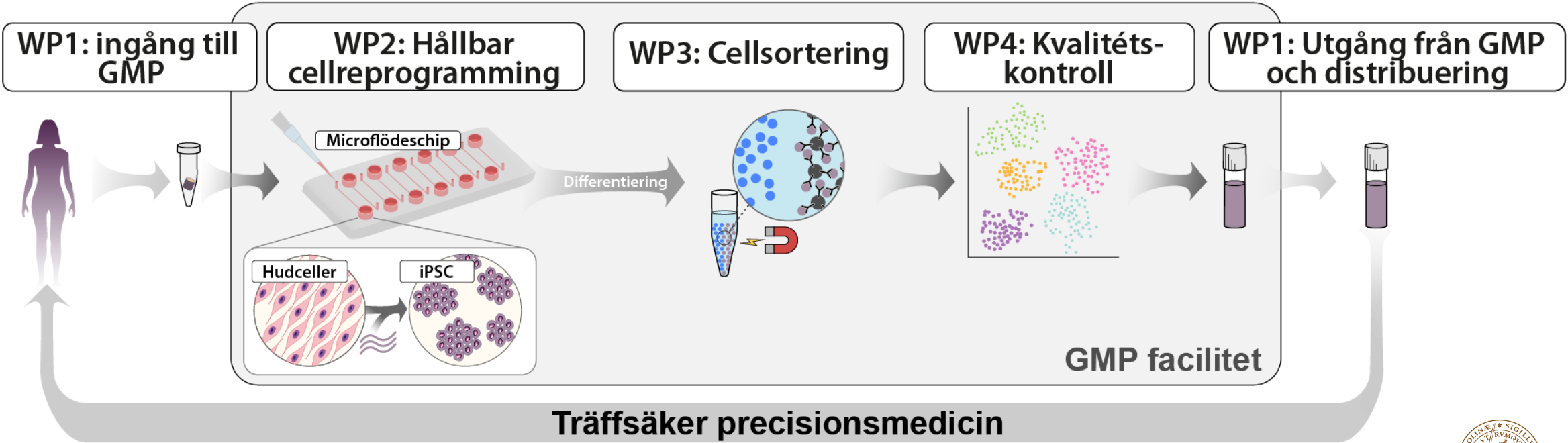
**LUND**  
UNIVERSITY

# IndiCell



# IndiCell

WP5: Innovation      WP6: Projektledning







LUND  
UNIVERSITY

# Pre-GMP Facilitet

---

ELIAS UHLIN PROJEKT LEDARE  
ELIAS.UHLIN@MED.LU.SE





**Anna Falk**  
Koordinator Indicell  
Professor, LU



**Malin Parmar**  
Professor, LU



**Fredrik Lanner**  
PI, KI

